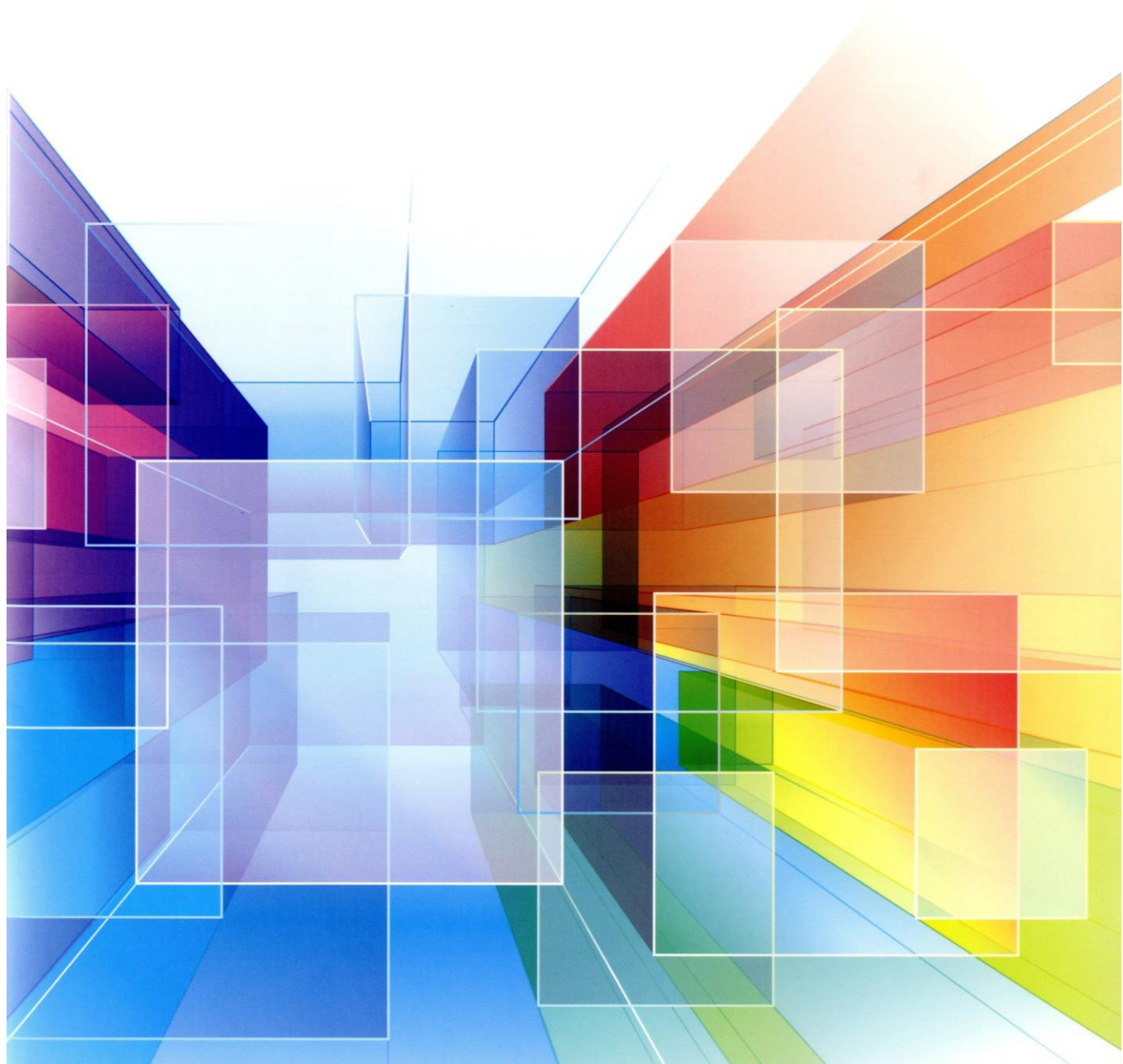




**SAKAMOTO ZOKI CO., LTD.**

MACHINES OF HIGH PRECISION AND SUPERIOR PERFORMANCES  
MACHINES EXTENSIVELY USED IN A WIDE VARIETY OF APPLICATIONS  
MACHINES DESIGNED IN UTMOST SAFETY AND EXCELLENT DURABILITY

# **PRODUCT GUIDE**    English Version



# Blanking machine with auto positioning system

【Servo-crank type】

## SCP865BN-APS



### Option

- Vacuum table for material setting
- Servo-controlled height adjustment system  
(Full & Half cut continuous program)
- Height adjustment in 0.001 mm
- Coaxial lighting

### Features

- High-precision blanking realized by SAKAMOTO's original image processing technology and machine construction.
- Speed changeable on the bottom dead point by adopting servo crank in running section
- High precision and easy to use, ideal for machining small processing parts
- Applicable with clean rooms that suppress dust emission
- Shortening time drastically for setting up by registering program in each item
- Easy to exchange Die in a short time by electric holder

Model	Max blanking area (mm)	Max Die size (mm)	Material length (mm)	Blanking stroke (mm)	Max pressure (ton)	Max blanking speed (spm)	Power (kw)	Weight (kg)	Machine size W×L×H (mm)
SCP600BN-APS	500×400	650×440	700~	40	30	180	18	3800	1450×4870×1590
SCP865BN-APS	500×500	820×540	700~	50	60	100	22	5800	1635×4970×1780
SCP1215BN-APS	900×600	1170×640	700~	50	60	100	25	7100	2060×5070×1780

\* The width of the blanking area is calculated 500 (900) mm as the X-table width is 550 (950) mm.

\* We would kindly ask you to let us have a separate consultation about material length and material width.

\* The blanking speed indicates the maximum speed in the case of just blanking unit's operation. The time for material feeding and positioning are necessary in the actual blanking process.

\* The machine size indicates the size when the operation panel is closed, and doesn't include the partial projection portion.

# Continuous blanking machine for sheet material

【Servo-crank type】

## SCP350BN / SCP600BN



### Option

- Servo-controlled height adjustment system (Full & Half cut continuous program)
- Height adjustment in 0.001 mm
- Simplified roll material stand
- SCP350BN slide table (material length Slide table can be extend Max. 1000 mm )



SCP350BN

### Features

- High precision and easy to use, Ideal for processing precision parts
- Speed changeable on the bottom dead point by adopting servo crank in running section
- High-precision progressive processing is possible with the servo feed table.
- Applicable with clean rooms that suppress dust emission
- Shortening time drastically for setting up by registering program in each item
- Easy to exchange Die in a short time by electric holder

Model	Max blanking area (mm)	Max Die size	Material length (mm)	Blanking stroke (mm)	Max pressure (ton)	Max blanking speed (spm)	Power (kw)	Weight (kg)	Machine size W×L×H (mm)
SCP350BN	350×250	400×290	500	40	10	170	6	1400	1050×2535×1470
SCP600BN	600×400	650×440	1100	40	30	180	14	3300	1355×4590×1555

\* The material length indicates the maximum size when a single die can perform blanking.

\* The blanking speed indicates the maximum speed in the case of just blanking unit's operation.

\* The machine size indicates the size when the operation panel is closed, and doesn't include the partial projection portion.

# Continuous blanking machine for sheet material

【Servo-crank type】

## SCP865BN / SCP1215BN



### Option

- Servo-controlled height adjustment system (Full & Half cut continuous program)
- Height adjustment in 0.001 mm
- Simplified roll material stand
- Slide table can be extend :Max. 2000 mm

### Features

- Speed up the best-selling continuous blanking machine with servo
- Speed changeable on the bottom dead point by adopting servo crank in running section
- High-precision progressive processing is possible with the servo feed table.
- Applicable with clean rooms that suppress dust emission
- Shortening time drastically for setting up by registering program in each item
- Easy to exchange Die in a short time by electric holder

Model	Max blanking area (mm)	Max Die size (mm)	Material length (mm)	Blanking stroke (mm)	Max pressure (ton)	Max blanking speed (spm)	Power (kw)	Weight (kg)	Machine size W×L×H (mm)
SCP865BN	780×500	820×540	1500	50	60	100	18	4800	1640×5565×1770
SCP1215BN	1130×600	1170×640	1500	50	60	100	19	6100	1990×5615×1770
SCP1430BN	1340×600	1380×640	1500	50	60	100	19	7000	2205×5635×1770

\* The material length indicates the maximum size when a single die can perform blanking.

\* The blanking speed indicates the maximum speed in the case of just blanking unit's operation.

\* The machine size indicates the size when the operation panel is closed, and doesn't include the partial projection portion.

# Continuous blanking machine for sheet material

【Mechanical crank type】

## 865B/1215B



### Option

- Servo-controlled height adjustment system (Full & Half cut continuous program)
- Height adjustment in 0.001 mm
- Simplified roll material stand
- Slide table can be extend :Max. 2000 mm

## Features

- High-performance blanking machine with sufficient rigidity and stable power
- High performance and easy to use, ideal for machining medium to large precision parts
- Continuous blanking machine that can processing wide range of materials with high precision
- Shortening time drastically for setting up by registering program in each item
- Easy to exchange Die in a short time by electric holder

Model	Max blanking area (mm)	Max Die size (mm)	Material length (mm)	Blanking stroke (mm)	Max. pressure (ton)	Max blanking speed (spm)	Power (kw)	Weight (kg)	Machine size W×L×H (mm)
865B	780×500	820×540	1500	50	50	66	7	5500	2215×5565×1770
1215B	1130×600	1170×640	1500	50	50	66	8	7300	2565×5615×1770
1430B	1340×600	1380×640	1500	50	50	66	8	8300	2760×5635×1770

\* The material length indicates the maximum size when a single die can perform blanking.

\* The blanking speed indicates the maximum speed in the case of just blanking unit's operation.

\* The machine size indicates the size when the operation panel is closed, and doesn't include the partial projection portion.

# Continuous blanking machine for sheet material

[Mechanical crank type]

## PAL500



**Option**

- Servo-controlled height adjustment system (Full & Half cut continuous program)
- Height adjustment in 0.001 mm
- Simplified roll material stand
- Slide table can be extend :Max. 2000 mm

### Features

- High-performance blanking machine with sufficient rigidity and stable power
- High performance and easy to use, ideal for machining medium to large precision parts
- Continuous blanking machine that can processing wide range of materials with high precision
- Shortening time drastically for setting up by registering program in each item
- Easy to exchange Die in a short time by electric holder

Model	Max blanking area (mm)	Max Die size (mm)	Material length (mm)	Blanking stroke (mm)	Max pressure (ton)	Max blanking speed (spm)	Power (kw)	Weight (kg)	Machine size W×L×H (mm)
PAL500	500×350	550×390	1000	40	20	120	5	2500	1155×4075×1500

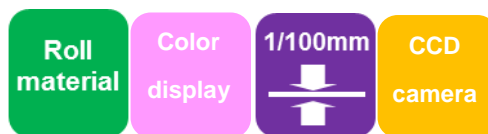
\* The material length indicates the maximum size when a single die can perform blanking.

\* The blanking speed indicates the maximum speed in the case of just blanking unit's operation.

\* The machine size indicates the size when the operation panel is closed, and doesn't include the partial projection portion.

# Blanking machine with auto positioning system for roll material 【Servo-crank type】

## SCP500E-APS



### Option

- Height adjustment in 0.001 mm
- Material supplying unit, material past device, Waste separation winding product winding unit, Cut device, etc.

### Features

- Positioning of roll materials is possible, increasing work efficiency.
- Speed changeable on the bottom dead point by adopting servo crank in running section
- Applicable with clean rooms that suppress dust emission
- Shortening time drastically for setting up by registering program in each item

Model	Max blanking area (mm)	Max Die size area (mm)	Blanking stroke (mm)	Max. pressure (ton)	Max blanking speed (spm)	Power (kw)	Weight (kg)	Machine size W×L×H (mm)
SCP500E-APS	490×490	520×520	70	30	90	9	4000	2220×4715×1760
SCP865EN-APS	700×500	700×540	70	60	90	19	5000	2490×4715×1760
SCP1215EN-APS	1050×600	1050×640	70	60	90	19	6000	2810×4815×1760

\* The blanking speed indicates the maximum speed in the case of just blanking unit's operation. The time for material feeding and positioning are necessary in the actual blanking process.

\* The machine size indicates the size when the operation panel is closed, and doesn't include the partial projection portion.

\* The optional unit, such as material unit, winding unit and so on, is not included.

# Continuous blanking machine for sheet and roll material

【Servo-crank type】

## SCP865EN/1215EN



**Option**  
 Un-winding unit, winding unit  
 waste-winding unit, meandering control (EPC) system, dancer roll, feeding conveyor,  
 Various value-added devices such as product loading can be connected  
 • Height adjustment in 0.001 mm

### Features

- Sheet material can be loaded from the front and discharged from the back.
- Continuous processing of roll materials is also possible using a feeding device if necessary..
- Possible with full cut process with underlay film that can also be used for transport.
- Shortening time drastically for setting up by registering program in each item
- Easy to exchange Die in a short time by electric holder

Model	Max blanking area (mm)	Max Die size (mm)	Blanking stroke (mm)	Max pressure (ton)	Max blanking Speed (spm)	Power (kw)	Weight (kg)	Machine size W×L×H (mm)
SCP350EN	300×250	400×290	40	10	150	6	2000	1055×3550×1550
SCP600EN	550×400	650×440	40	30	180	12	2700	1660×4505×1915
SCP865EN	700×500	820×540	50	60	100	17	4300	1910×5705×2085
SCP1215EN	1050×600	1170×640	50	60	100	17	5600	2260×5755×2085
SCP1430EN	1250×600	1380×640	50	60	100	17	6500	2500×5755×2085

\* The blanking speed indicates the maximum speed in the case of just blanking operation.

\* The machine size indicates the size when the operation panel is closed, and doesn't include the partial projection portion.

\* The material unit and winding unit are not included.



# Servo cutter for sheet and roll material

【Servo-crank type】

## SC600RTN / 1200RTN



### Option

- Lamination/winding device
- Front and rear double roll
- Roll up/down synchronization
- Angle/slide fine adjustment

### Features

- 3 types of feeding systems; (1) System switchable between sheet material and roll material (RT), (2) System just for roll material (R) and (3) System just for sheet material (T)
- Changeable the cutting height during processing using height control using a servo motor  
Blanking height is adjustable in every 0.001 mm/; full-cut and half-cut intermixed program is available
- Surface die can also be used with sufficient rigidity and pressure force.
- Speed changeable on the bottom dead point by adopting servo crank in running section
- Shortening time drastically for setting up by registering program in each item

Model	Max cutting width (mm)	Max blanking area (mm)	Max blanking area (mm)	Blanking stroke (mm)	Max. pressure (ton)	Blanking speed (spm)	Power (kw)	Weight (kg)	Installation area W×L×H (mm)
SC600RN	600	600×150	650×180	40	7	220	7	2600	1500×1780×1590
SC600TN	600	600×150	650×180	40	7	220	7	2700	1460×3545×1590
SC600RTN	600	600×150	650×180	40	7	220	8	2800	1500×3795×1590
SC1200RN	1200	1200×150	1250×180	40	7 (15)	220 (180)	7(9)	3300	2100×1780×1590
SC1200TN	1200	1200×150	1250×180	40	7 (15)	220 (180)	7(9)	3400	2060×3545×1590
SC1200RTN	1200	1200×150	1250×180	40	7 (15)	220 (180)	8 (10)	3600	2100×3795×1590

\* The material length indicates the maximum size when a single die can perform blanking.

\* The blanking speed indicates the maximum speed in the case of just blanking unit's operation.

\* The machine size indicates the size when the operation panel is closed, and doesn't include the partial projection portion.

# High-precision single shot blanking machine

**【Servo-crank type】**

## SCP600T/865T/1215T/1430T



### Features

- Half cut specification
- Equipped with automatic table and die holder as standard
- Bottom dead center deceleration processing is possible
- Low dust emission, suitable for clean rooms

Model	Max blanking area (mm)	Max Die size (mm)	Blanking stroke (mm)	Max pressure (ton)	Blanking speed (spm)	Electricity (kw)	Weight (kg)	Machine size W×L×H (mm)
SCP600T	600×400	650×440	40	30	70	8	2500	1315×2050×1560
SCP865T	780×500	820×540	50	60	70	12	4200	1600×2310×1770
SCP1215T	1130×600	1170×640	50	60	70	12	5200	1950×2495×1780
SCP1430T	1340×600	1380×640	50	60	70	13	5800	2165×2495×1780

\* The blanking speed indicates the maximum speed in the case of just blanking unit's operation.

**【Mechanical crank type】**

## PAL500T/PH865/1215

## PW865/1215/1430

- Full cut specification (PW) manual table
- Half-cut specification (PAL/PH) automatic table/die holder
- Crank type and powerful



Model	Max blanking area (mm)	Blanking stroke (mm)	Max pressure (ton)	Blanking speed (spm)	Power (kw)	Weight (kg)	Machine size W×L×H (mm)
PAL500T	500×350	40	20	55	3	1800	1040×1855×1510
PH865	780×500	50	50	55	5	4500	2215×2305×1770
PH1215	1130×600	50	50	55	5	5500	2565×2460×1770
PW865	800×500	50	50	55	4	4000	2215×2240×1770
PW1215	1150×600	50	50	55	4	4900	2565×2410×1770
PW1430	1360×600	50	50	55	4	5400	2775×2390×1770

\* The blanking speed indicates the maximum speed in the case of just blanking unit's operation.

\* The machine size indicates the size when the operation panel is closed, and doesn't include the partial projection portion.



Blanking machine with high precision

**SAKAMOTO ZOKI CO., LTD.**

**Head Office & Factory**

3-9-5 Techno-stage, Izumi City, Osaka Pref. 594-1144

TEL +81 (0)725 51 2251 (Key number)

FAX +81 (0)725 51 2356

Mail [dream@sakamotozoki.co.jp](mailto:dream@sakamotozoki.co.jp)

Web <http://www.sakamotozoki.co.jp>